



RENTAL BUILDINGS, BARNES, & RV PARK

The Saline County Expo Center is a dynamic venue, hosting a wide range of events from circuses and monster truck shows to concerts and livestock exhibitions featuring rabbits, poultry, cattle, horses, donkeys, goats, sheep, and hogs. It's also a popular choice for weddings, receptions, meetings, fundraisers, vendor fairs, and 4H events. We're especially proud to host the Tri-Rivers County Fair.

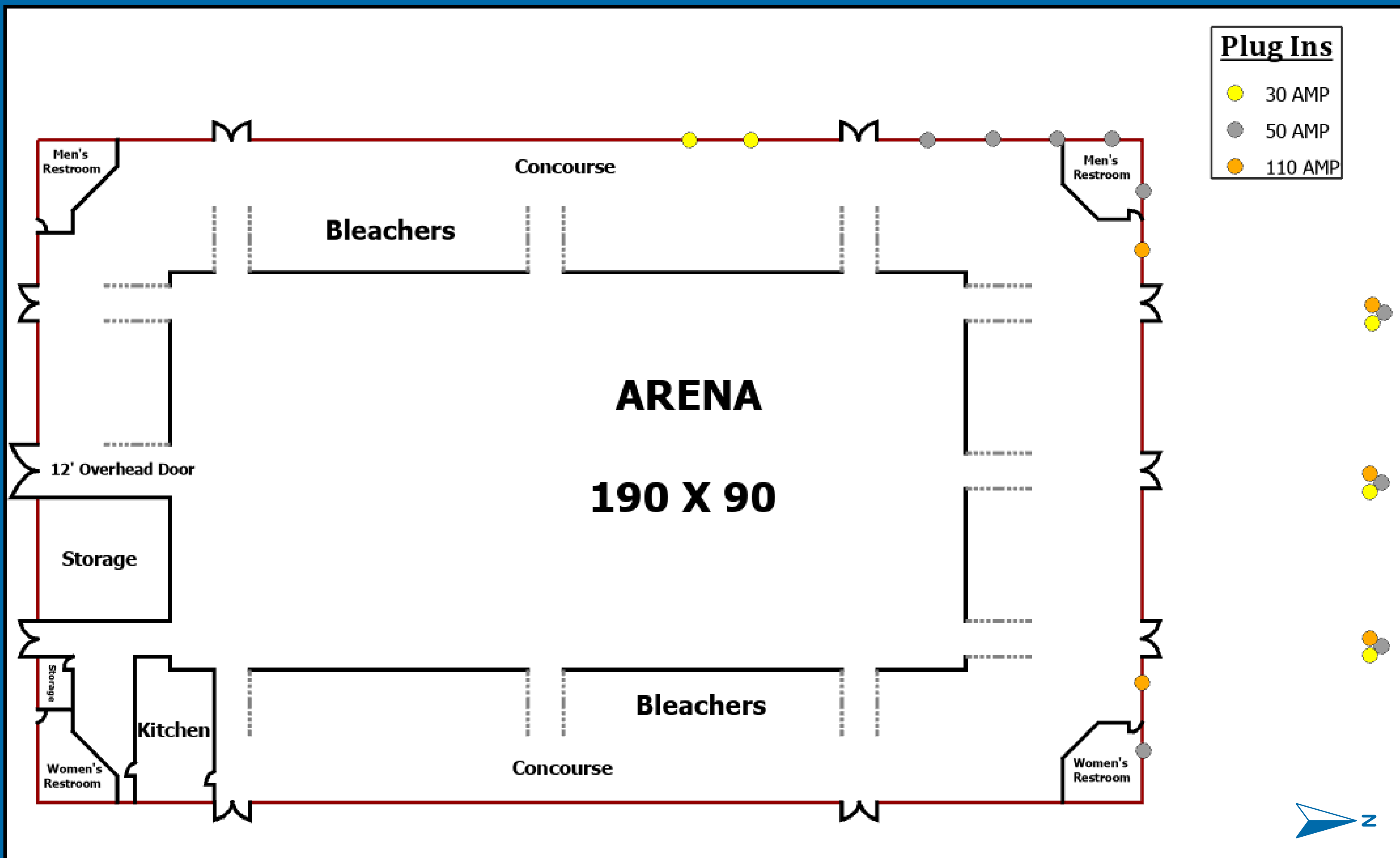
Our dedicated staff provides comprehensive services to ensure the success of your event. We handle table and chair setups, maintain cleanliness, and oversee crucial tasks such as unlocking doors, restroom upkeep, trash disposal, and spill management. For added assurance, we conduct a final walkthrough with you before securing the venue.



AG HALL

Our historic indoor arena, built in 1924, boasts a dirt floor and spans approximately 90 feet in width by 190 feet in length. It can comfortably accommodate around 2,600 guests, making it ideal for a variety of events. For vendors, electric hookups are conveniently available on the north and west sides of the building.





OUTSIDE ARENA

THE OUTDOOR WARM-UP PEN, MEASURING 145 FEET BY 90 FEET, IS CONVENIENTLY SITUATED ON THE SOUTH SIDE OF AG HALL.



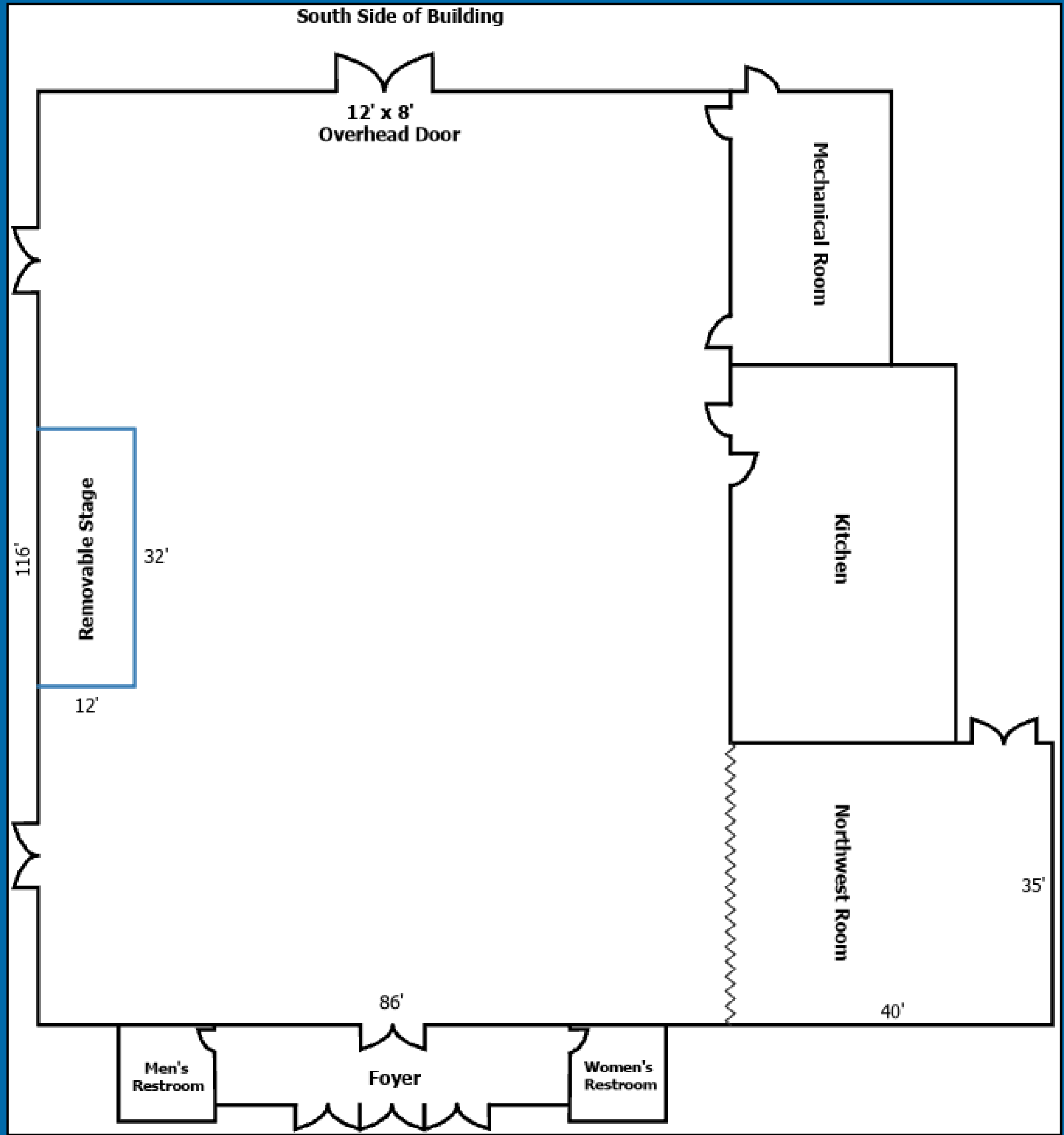
4-H BUILDING

The 4H Building, built in 1957, measures 138 feet by 124 feet. It has a stage, projector, and sound system.

Additional amenities include a commercial kitchen and smaller meeting areas that can be partitioned.



4-H Bldg Layout



BARN 1

FEATURING 138 ADAPTABLE HORSE STALLS, THIS BARN IS WELL-EQUIPPED TO ACCOMMODATE A VARIETY OF LIVESTOCK. IT ALSO OFFERS ACCESSIBLE ELECTRIC OUTLETS AND SIX WATER HYDRANTS.





148 Stalls

BARN 2

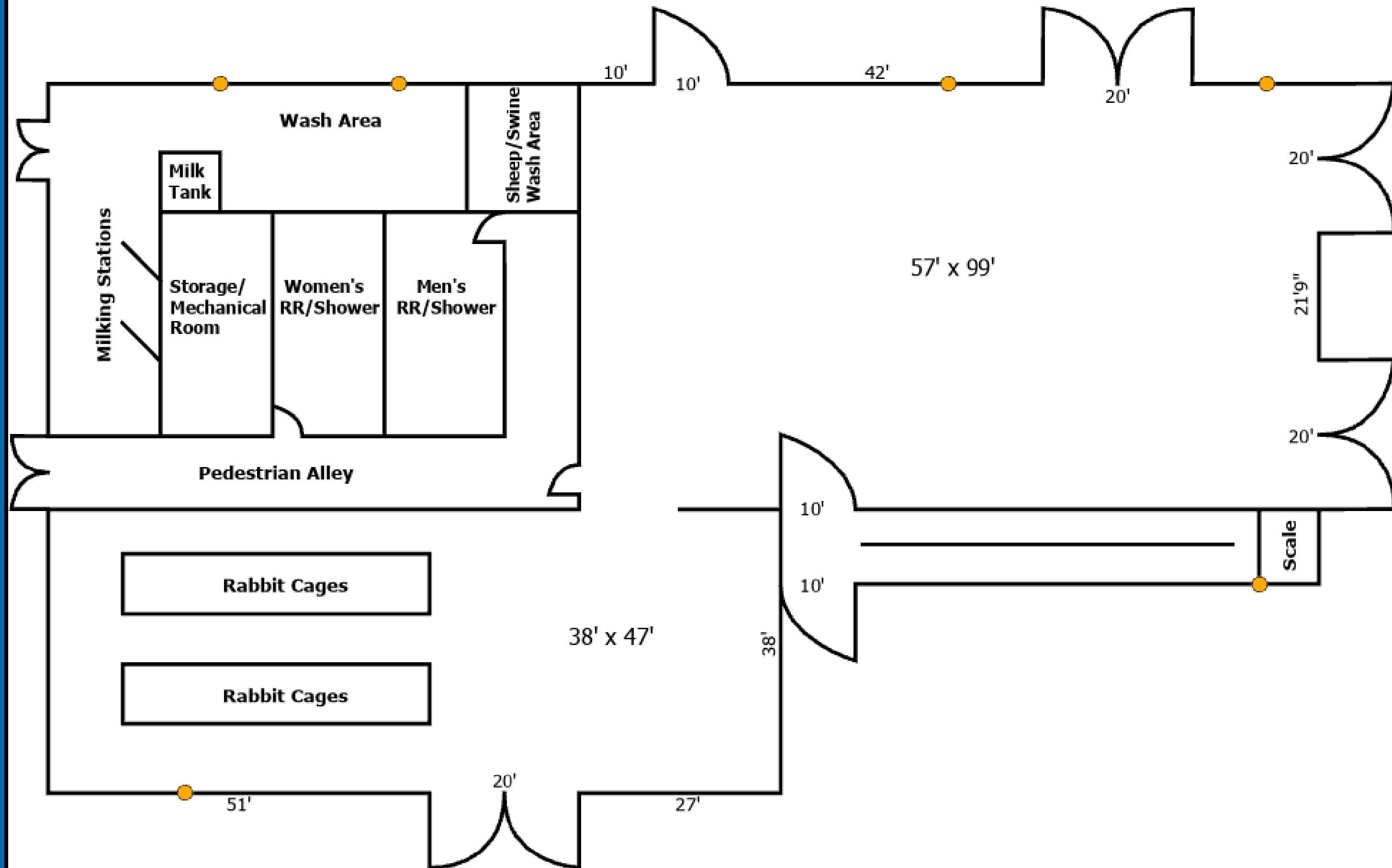
BUILT IN 1973, THIS
MULTIFUNCTIONAL BARN
ACCOMMODATES GOAT, SHEEP,
HOG AND RABBIT SHOWS. IT
INCLUDES RESTROOMS, SHOWERS
AND A GRADE A MILKING ROOM.



Barn 2 Layout

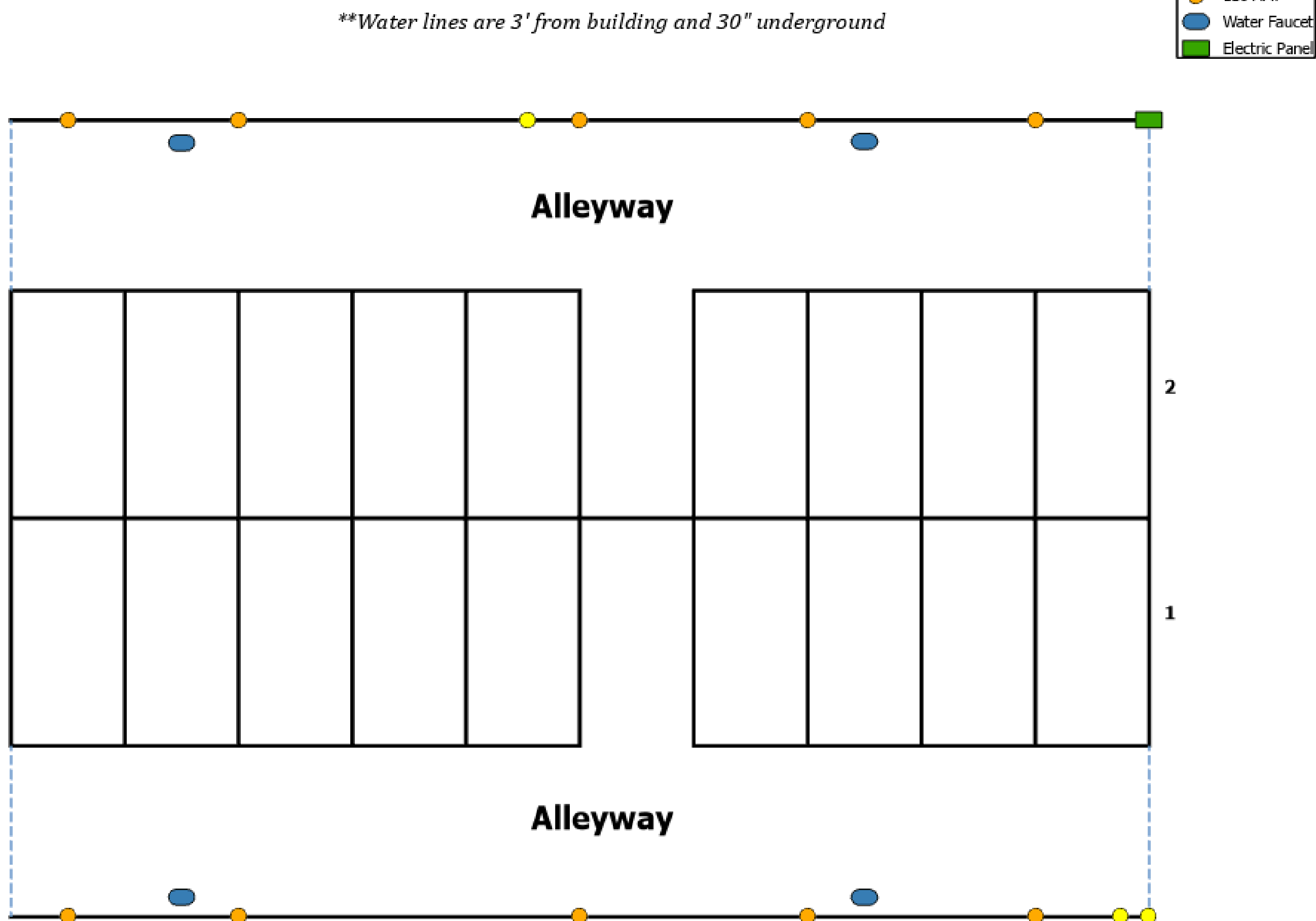


Plug Ins
● 110 AMP



BARN 3

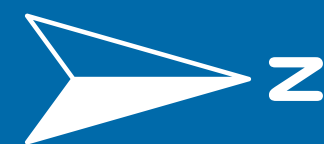




BARN 5

This barn is equipped with 16 stalls, each measuring 10 feet by 10 feet by 7 feet. The facilities include electrical plugs and a water faucet, ensuring convenience and functionality.

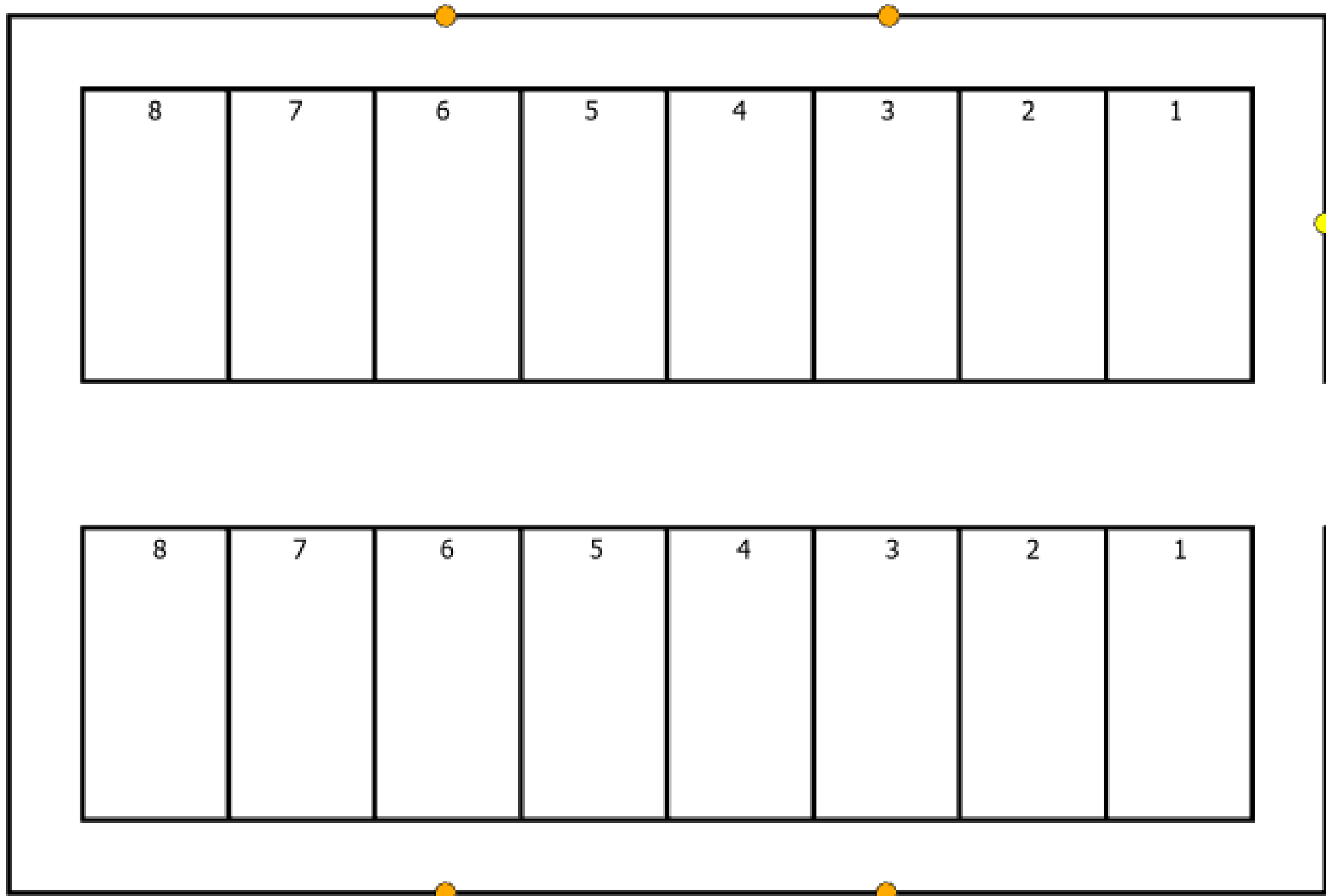




Plug Ins

● 30 AMP

● 110 AMP



BARN 6

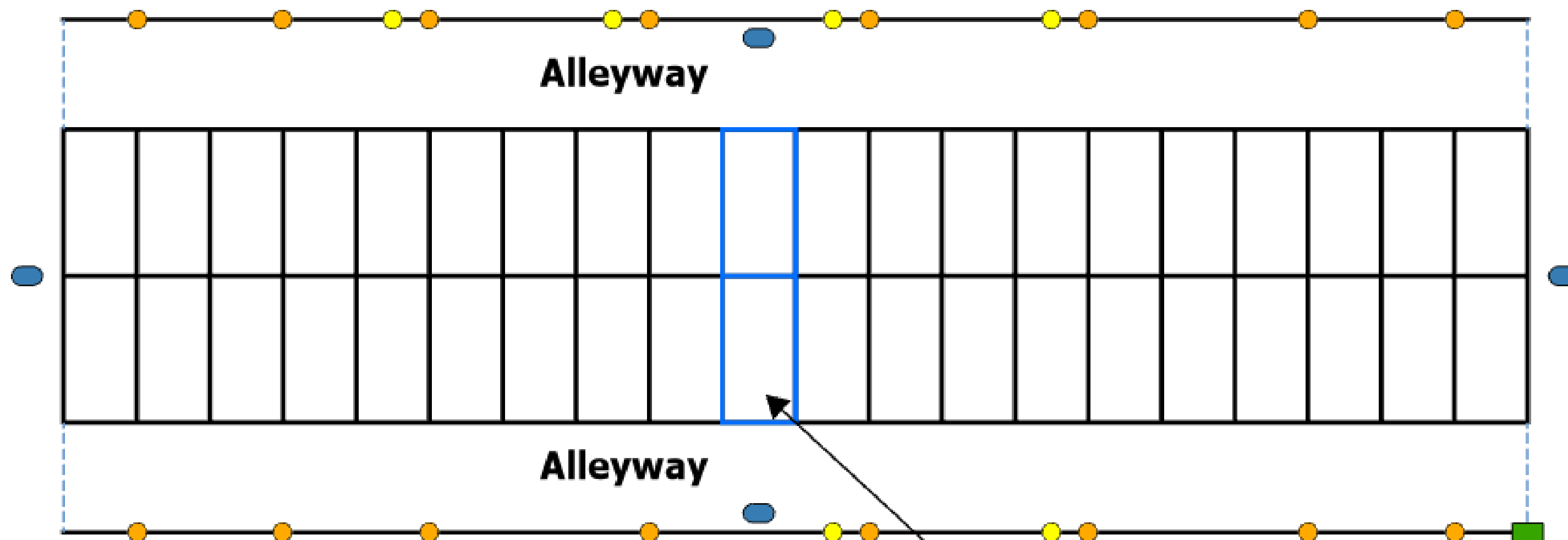
Barn 6 offers 40 stalls, all equipped with 110V plugs and six 30-amp plugs, ensuring adequate electrical support for various needs.



Legend

- 30 AMP
- 110 AMP
- Water Faucet
- Electric Panel

*** Stalls can fold back to the middle to make tie-out for cattle.*



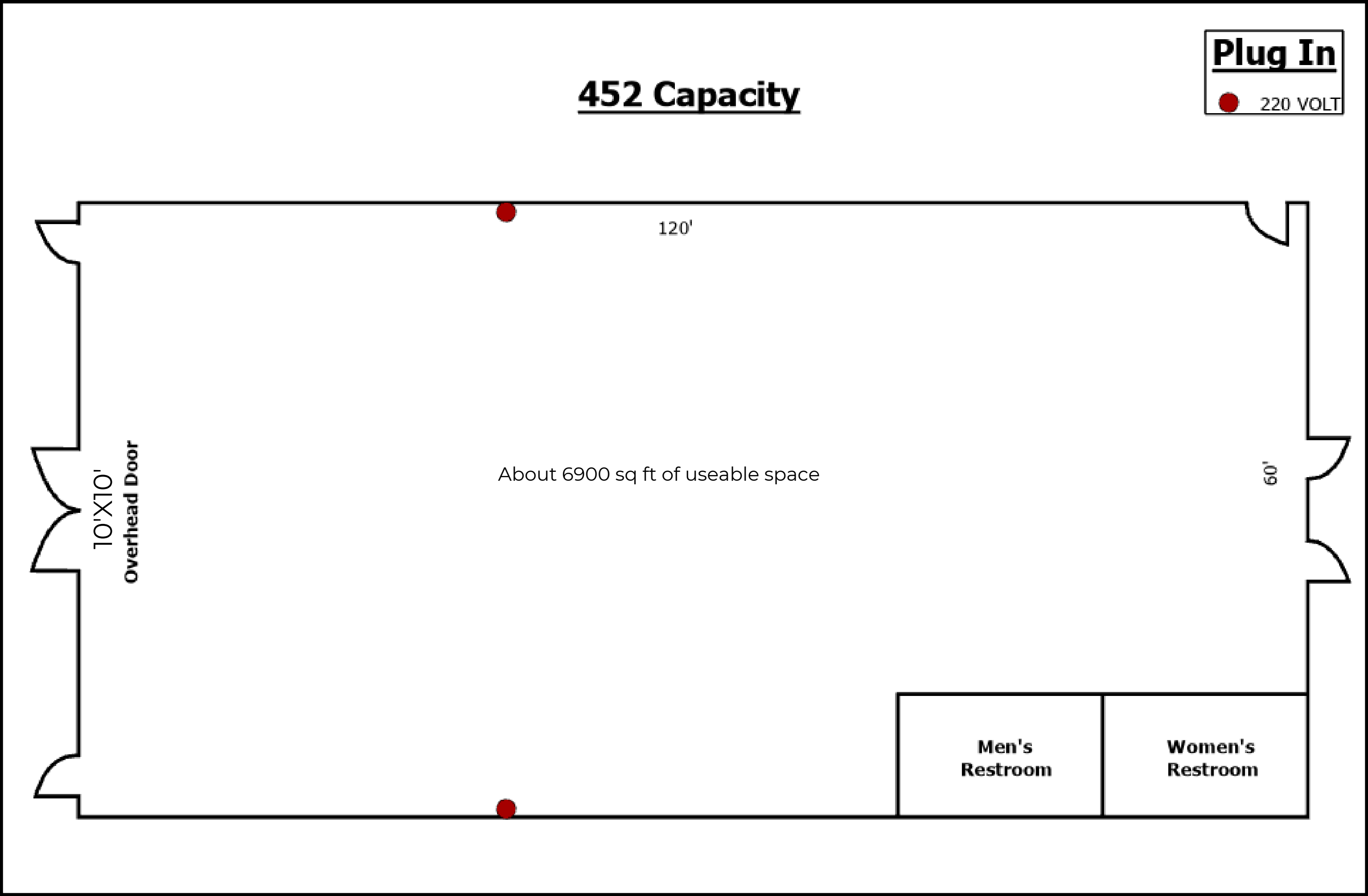
These stalls can be configured so there is a walkway through.



KENWOOD HALL

This versatile 60-by-120-foot metal building includes restrooms and a water fountain. Tables and chairs are provided.





RV PARK

THE RV PARK OFFERS 10 SPOTS WITH WATER AND ELECTRIC HOOKUPS (EACH SPOT INCLUDES ONE 110V PLUG AND ONE 30-AMP PLUG) FOR \$20 PER NIGHT. SPACES ARE AVAILABLE ON A FIRST-COME, FIRST-SERVED BASIS.



MEET OUR STAFF



DAVID FLAHERTY II

FLAHERTYD@SALINECOUNTYKS.GOV

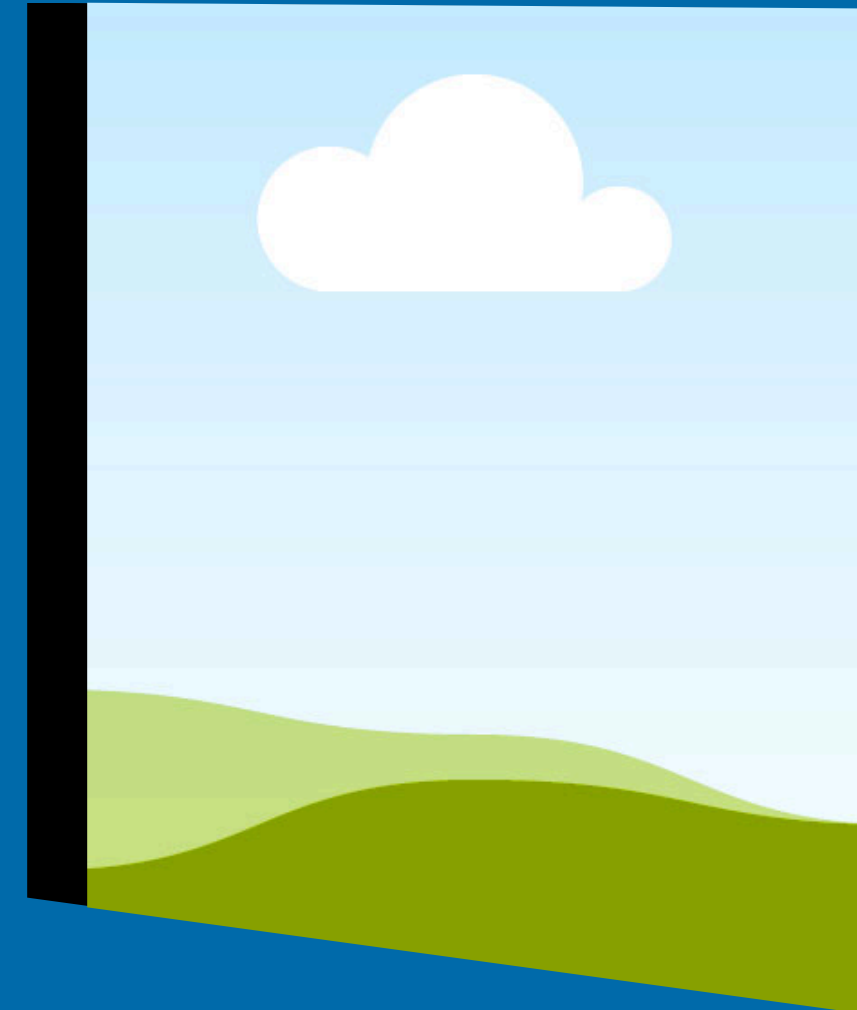
DIRECTOR EXPO/ NOXIOUS
WEED DEPT.



JEREMY BOWMAN

BOWMANJ@SALINECOUNTYKS.GOV

MAINTENANCE SUPERVISOR



BETH ANDERSON

ANDERSONE@SALINECOUNTYKS.GOV

ADMINISTRATIVE AIDE



900 Greeley Ave.
Salina, KS 67401

Office: 785.826.6532
Fax: 785.826.6534

www.salinecountyks.gov
Find us on Facebook

